



Marker Guardian C800

The C800 is a composite construction, with high production rates, offering:

- Lightweight
- High resistance;
- Large battery & payload section;
- Excellent buoyancy & stability;
- Easy to deployment & service;
- Excellent corrosion resistance.

Cost effective & environmentally friendly.
Customization to better suit your needs.

Highlighted features:

- Light weight
- Easy handling
- Long Service Life
- Customizable
- Low maintenance
- I.A.L.A. compliant
- Impact resistant



The Marker Guardian C800 is a buoy designed to be customizable, it can be transformed in to a cardinal buoy, indicating cardinal directions or indicating starboard or port board, thus helping the navigation near ports and other maritime traffic zones.

Available marker buoys from C800 family:

- North
- South
- West
- East
- Isolated Danger
- Safe Waters
- Star Hand and Port hand (Zones A and B)

The high capacity allows it to be configured for water quality or other environmental parameters monitoring.

The MG C800 is fully built in composite, withstanding impacts, solar exposure, ice, salt water and corrosion exemplary. Each section is laminated using UV-stabilized, isophthalic polyester resin reinforced with Kevlar* and glass fibers to obtain maximum durability, crash resistance and water impermeability. With thicknesses ranging from 7 up to 10mm this structure is rigid durable and reliable.

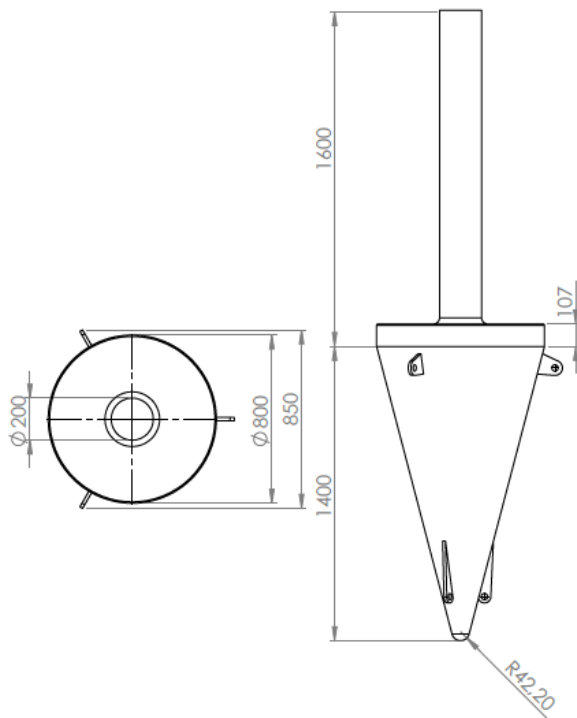
The C800 performs extraordinarily and can be equipped with batteries to feed illumination systems for up to 6 months.

The fully composite structure assures a rust free, low maintenance lifespan. No part of the structure requires painting at any stage of the product's life span. This MG can be supplied in respective I.A.L.A. colors.

*optional



Marker Guardian C800



Marker Guardian C800

General Characteristics

Available Colors	Black, Yellow, Red and others as per I.A.L.A. recommendations
Reserve Buoyancy (Kg/lb)	352/776
Focal Plane Height (mm/in)	1700/67
Total Float Volume (L/gal)	315/83
Nominal Freeboard (mm/in)	107,0/4,2
Freeboard, Minimum (mm/in)	0
Draft, Maximum (mm/in)	1400/55
Nominal Draft (mm/in)	1325/52,17
Reserve Buoyancy (Kg/lb)	352/776
Visual Area (m ² /ft ²)	0,38/4,1
Water Area (m ² /ft ²)	1,8/19,4
Ballast (Kg/lb)	88/194
Maximum Mooring Load (Kg/lb)	176/388
Safe Working Load, 1point (Kg/lb)	3000/6614
Safe Working Load, 2points (Kg/lb)	6000/13228
Submergence (Kg.cm ⁻³ /lb.in ⁻³)	0,27/0,60

Physical Characteristics

Material	Isophthalic NPG Polyester resin reinforced with Kevlar and glass fiber; 316-grade SS fixtures
Height (mm/in)	3000/118
With (mm/in)	800/31,50
Wall Thickness (mm/in)	7/0,28
Mass (Kg/lb)	138/304
Product Life Expectancy	>20 years
Certifications I.A.L.A.	Surface colors compliant to I.A.L.A. E-108
Intellectual Property Trademarks	Marker Guardian is a registered trademark of Composite Solutions, Lda.
Quality Assurance	ISO9001:2008
Warranty	1 year

Optional Equipment

Data logger with Bluetooth connectivity with upgradability up to 32 sensors
32Gb of data storage
LCD display
Adjustable measuring time intervals
Dissolved Oxygen Kit
Electrical conductivity, temperature & depth sensor Kit
GPS
Temperature, humidity, wind & pressure Kit
Surveillance camera/motion sensor Kit
Solar Panels
Upgraded battery capacity
Status light
Wi-Fi, VHF, Iridium, RF, GPRS, 3G & 4G